



Chosen site satellite

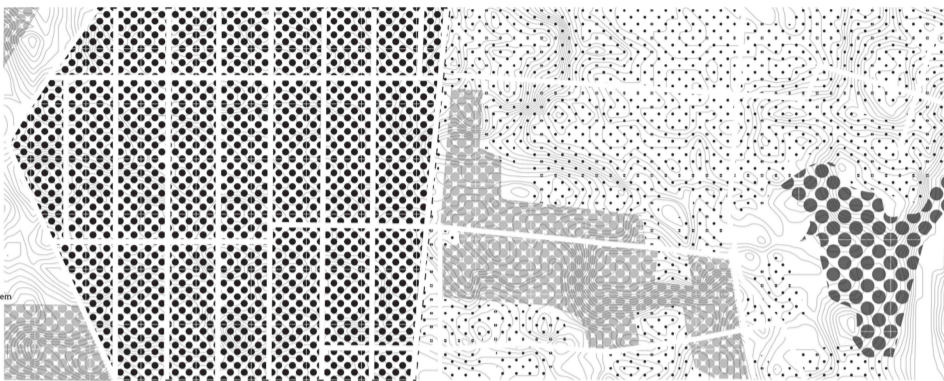
Streets marked with white colour



Land use

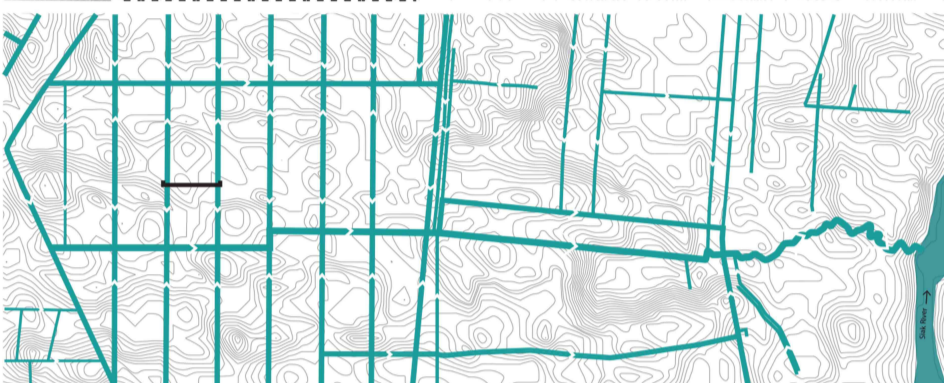
- timber plantation
- palm oil big plantation
- palm oil small plantation
- primary forest

area of most exploited plantation, started in 2008 very regular with a manufactures ditch system



Drainage Canals

- river
- canals by width
- buildings



Tree Cover Loss

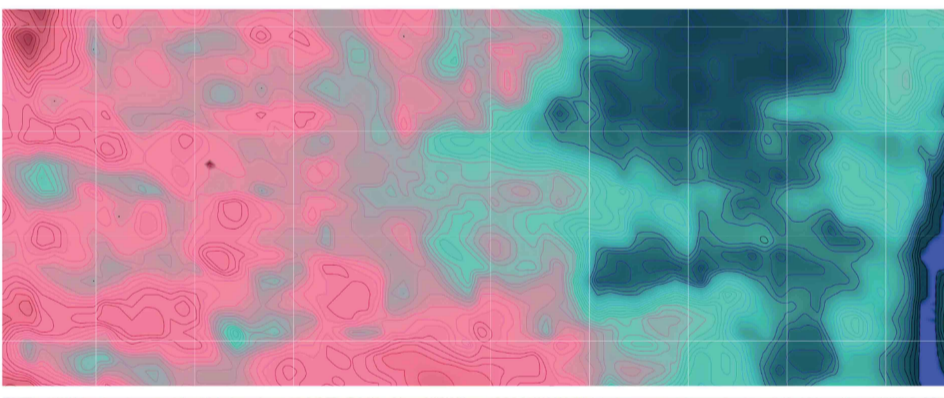
- 2000-2006
- 2006-2015
- 2008

Deforestation and land conversion throughout sixteen years (between 2000 and 2015) with plantation equipment



Topography

- 35 m ASL
- 0 m ASL

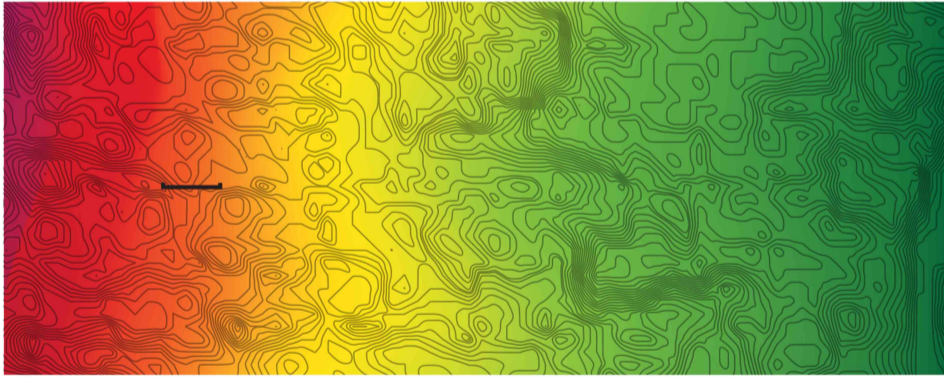


Peatland Depth

Major peat dome thickness based on LIDAR-Survey and Field Measurements surface elevation model - most accurate studies.

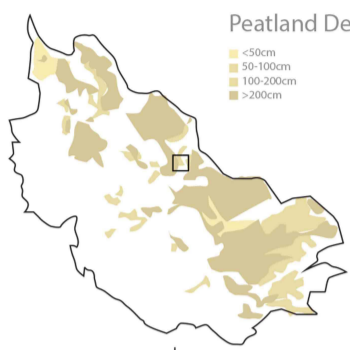
- 0
- 1
- 2
- 3
- 4
- 5
- 6
- 7
- 8
- 9
- >10

- dense tree cover
- exposed land
- exposed land



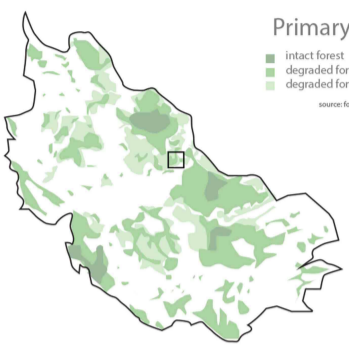
Peatland Depth by 2010

- <50cm
- 50-100cm
- 100-200cm
- >200cm



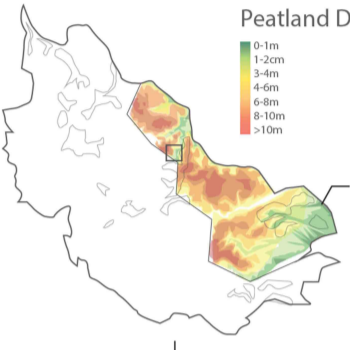
Primary Forest

- intact forest
- degraded forest before 2000
- degraded forest after 2000



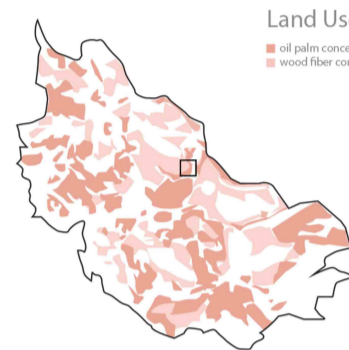
Peatland Depth at 2016

- 0-1m
- 1-2cm
- 3-4m
- 4-6m
- 6-8m
- 8-10m
- >10m



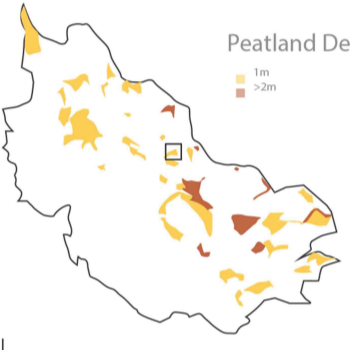
Land Use

- oil palm concessions
- wood fiber concessions



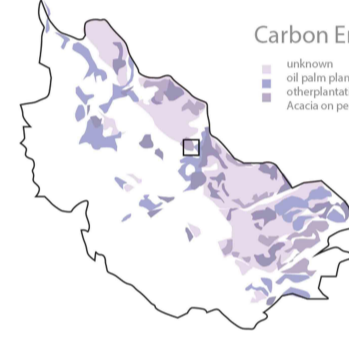
Peatland Depth Loss

- 1m
- >2m



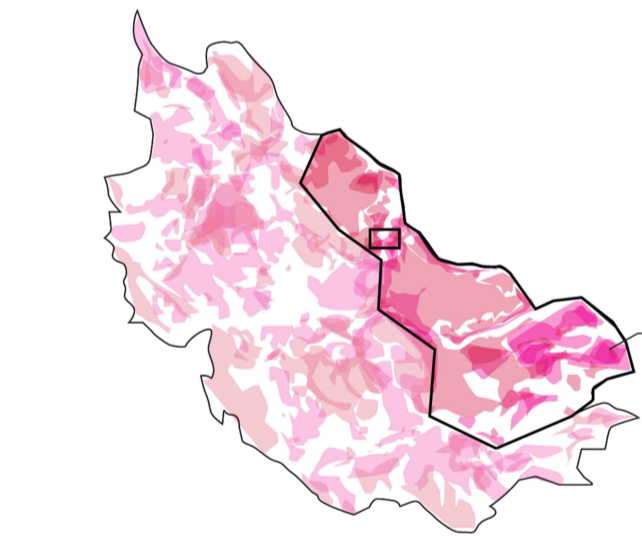
Carbon Emission

- unknown
- oil palm plantation
- otherplantation on peat
- Acacia on peat



Overlaying

- degraded forest
- carbon emission
- peatland depth loss
- palm oil plantations



Studies show that rising sea levels will engulf the peninsula in 20 years. Actions to rescue the land are already undertaken. It was the reason why design site is in different location.

Deforestation map 1992-2008

